

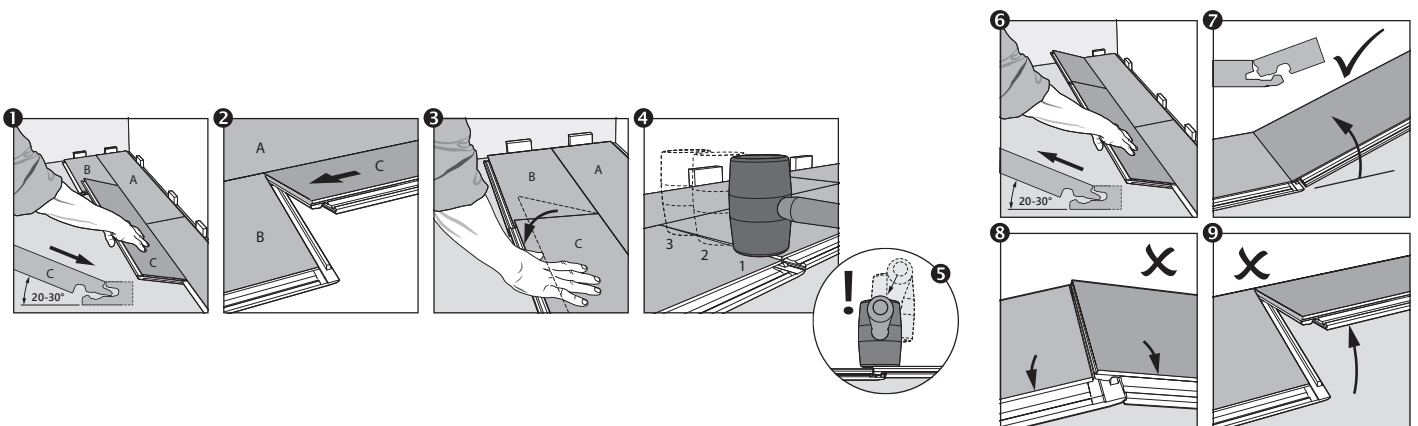
6 mm SPC (Stone-Plastic-Composite) Vinyl-Click Flooring. Vinyl wear layer 0.55 mm
Pre-attached Virgin High Density IXPE underlay 1.00 mm. Total depth 6.00 mm

1. Installation tools

Tape measure	Tapping block (trimmed piece of flooring)	Pencil	Pry bar or pull bar
Chalk line	Spacers	Rubber mallet	

INSTALLATION

1. To be able to correctly install the short sides of panels (B) and (C) using the Unidrop system, you first need a panel as support for the long side alignment of panels (B) and (C). The long sides of the panels can be joined with a Uniclic locking system, using an angle movement, as shown in figure 1. Be sure to connect the groove of plank (A) with the tongue of planks (B) and (C).
2. When plank (B) is correctly installed on the long side, you can position the left corner of the head end of plank (C) against the previous panel and drop the short side of the panel down with a single action movement into the head end of the adjacent panel (B). See figures 2 and 3. During the fold-down, make sure that the panels are close to each other and the long side of the panels is correctly installed.
3. Make sure each end joint is completely engaged. Use a rubber hammer to fully connect the short sides of the panels. See figure 4. The hammering should be done in the direction of and partly on the underlaying panel, as shown in figure 5. Please be careful not to damage the profile or edges during engaging the panels.



DISASSEMBLY

1. Separate the whole row by carefully lifting up and release the whole row, as shown in figure 6.
2. Angle the tongue of the short side up of the panel, as shown in figure 7.